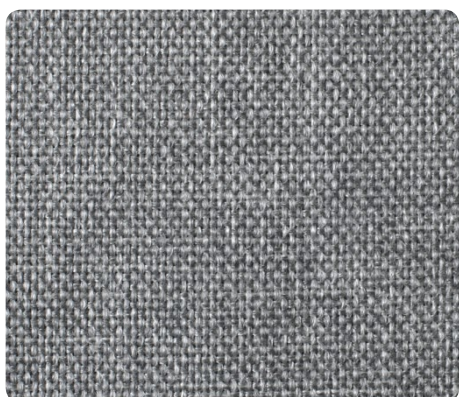
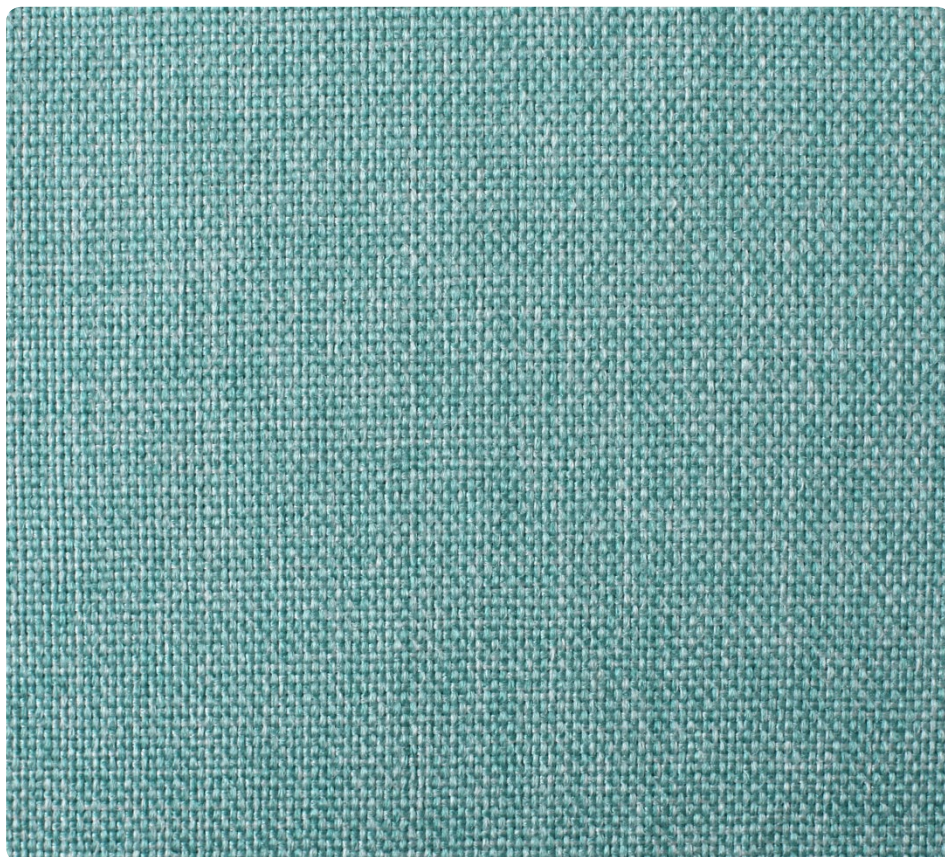


OX28 | Grafitowy



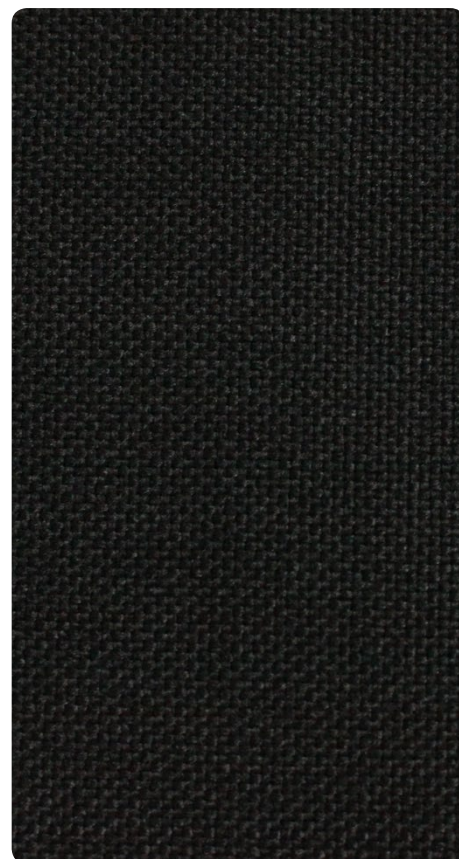
OX19 | Metaliczny



OX21 | Błękitna Laguna



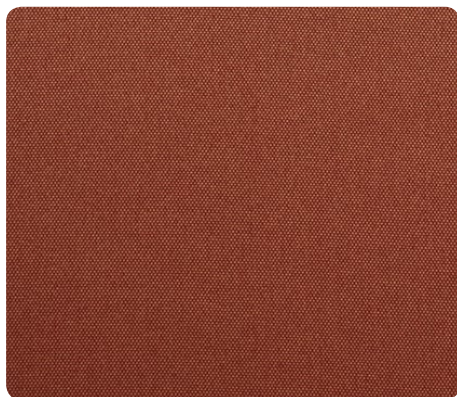
OX22 | Dżins



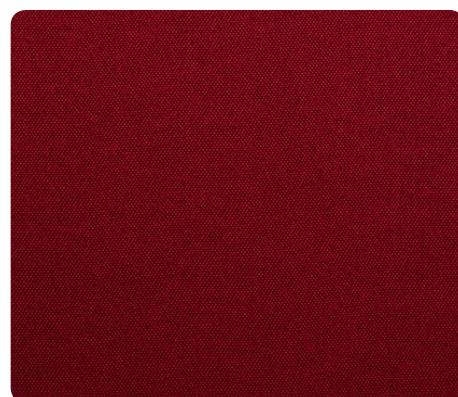
OX31 | Węglowa Czerń



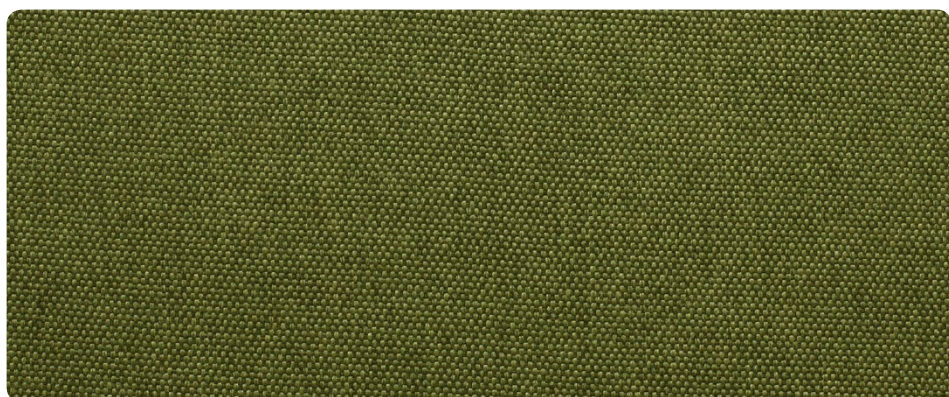
ET22 | Ruchome Piaski



ET51 | Oranz Pomarańczy



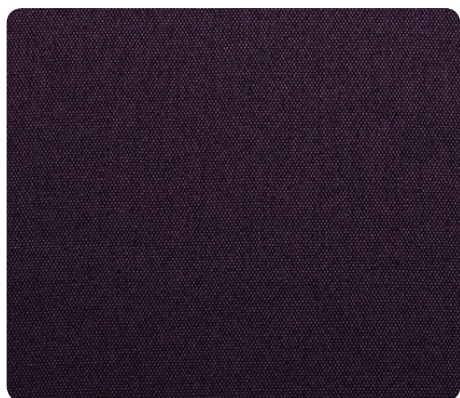
ET60 | Krwista Czerwień



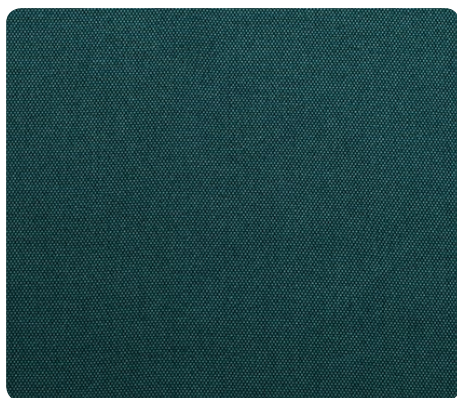
ET35 | Wiosenna Zieleń



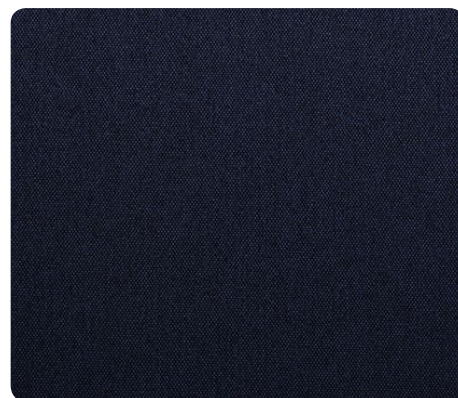
ET78 | Landrynkowy Róż



ET65 | Jagodowy



ET85 | Morskie Fale



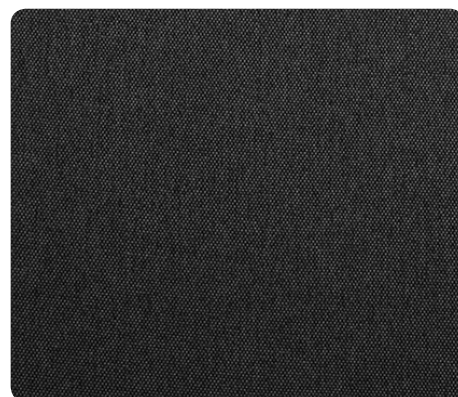
ET80 | Atramentowy



ET90 | Platyna



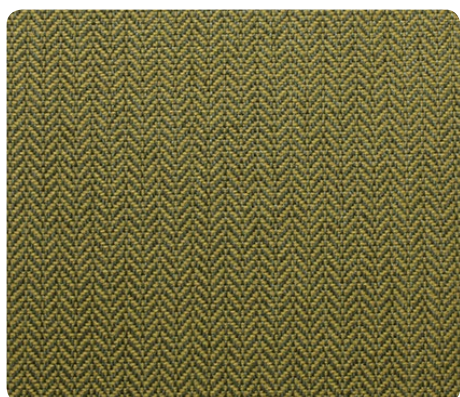
ET91 | Stalowy



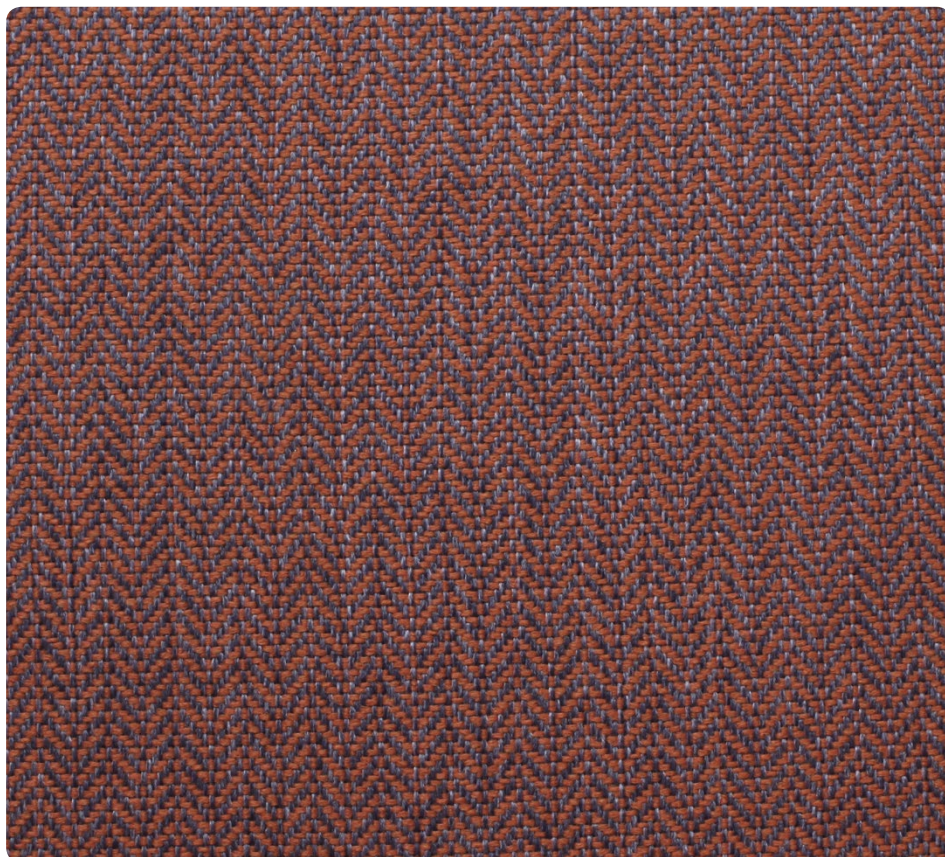
ET95 | Karbon



NO07 | Jasnoniebieski



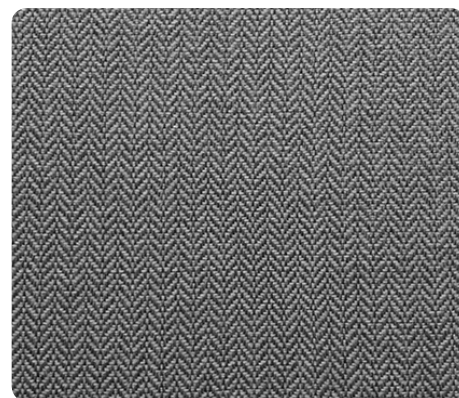
NO08 | Cytrynowy



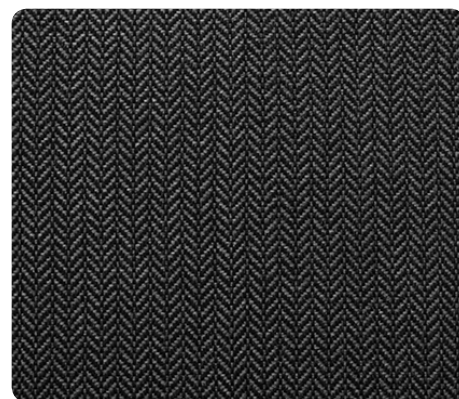
NO05 | Nordic Pink



NO09 | Turkusowy

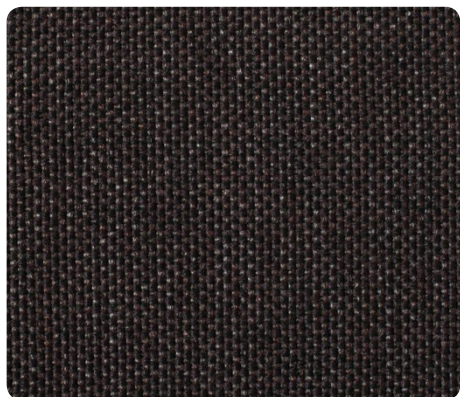


NO11 | Srebrny

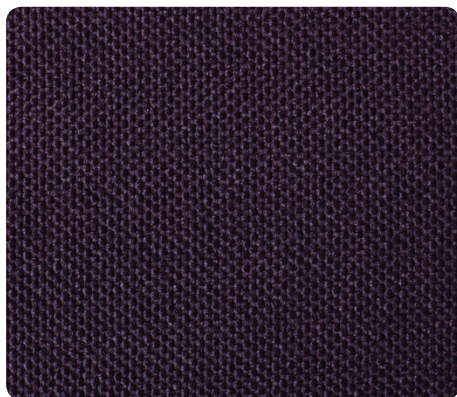


NO12 | Ciemnoszary

# UNEVEN GRUPA ①



1305 | Ziarno Kawy



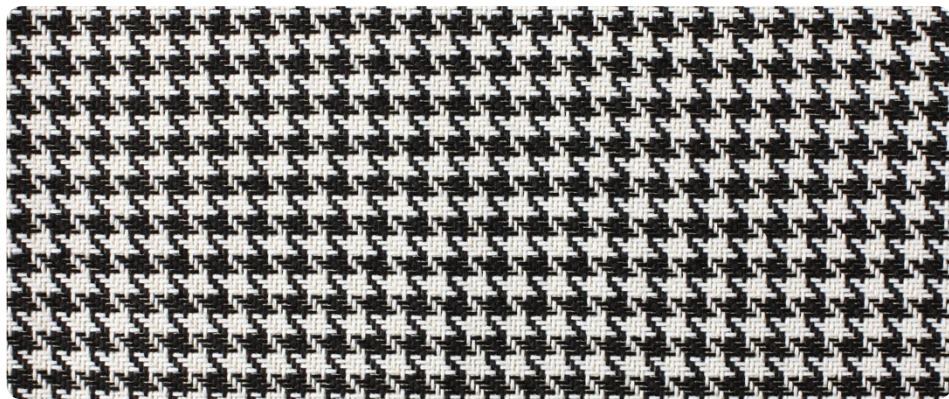
1309 | Śliwkowy



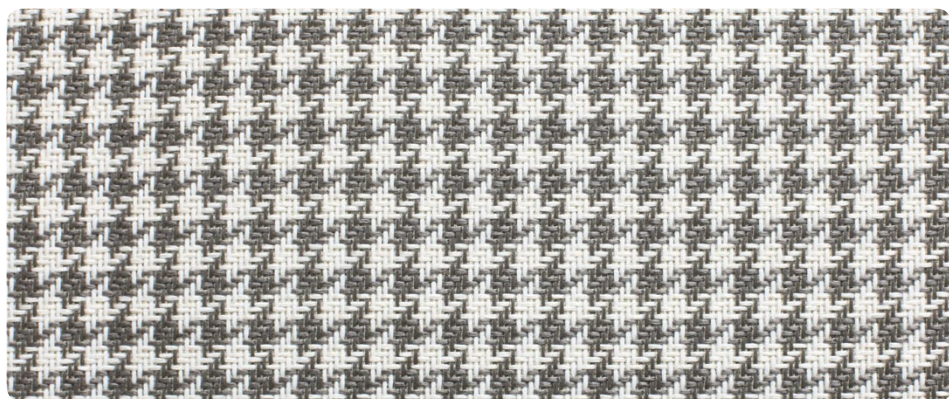
1310 | Kurkuma

**Dane techniczne:** 81% Polipropylen, 19% Poliester | Gramatura: 300 g/m<sup>2</sup>

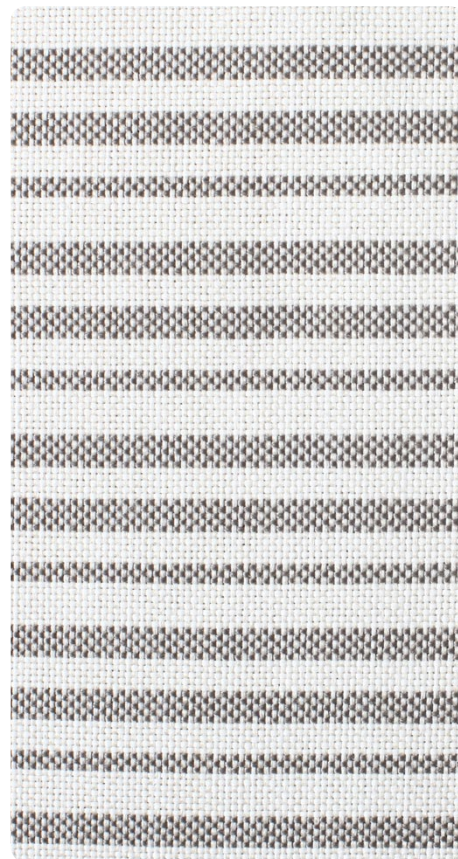
# MOTIF GRUPA ①



KE700 | Ciemna Pepita



KE701 | Jasna Pepita



TO706 | Paski

**Dane techniczne:** 33% Poliester, 67% Olefin | Gramatura: 459 g/m<sup>2</sup> | Martindale: 32 000